

From mountain to sea

Low Cost Shared Equity FOR RESALE

5 Marshall Close, Newburgh, AB41 6DQ

2 bed Mid Terrace House

£114,034



Low Cost Shared Equity Property Schedule

Description	Price
2 bedroom mid terrace house	£114,034
Floor Space	Income Threshold
Approximately 71 Square Metres	£42,000
Included in Sale	Factoring Charge
White goods in Kitchen included in sale. New carpeting in lounge, stairwell, upper hall, 2 bedrooms, study/storeroom and satellite can be purchased through separate negotiation with owner	Approx. £136.18 Life Property Management – covers ground maintenance, public liability insurance.
Parking Arrangements	Council Tax Band
Parking for one car on drive One car for designated exclusive parking space	unknown
Garden	Year Built
Private garden at rear	2015
Heating Type	Eligibility Criteria
Gas fired central heating boiler supplies radiators	See Guidance notes for Eligibility Criteria
Energy Performance Rating	Closing Date
unknown	Return applications as soon as possible. Applications will be assessed on a first come basis.

The information supplied above in this schedule regarding the specific property has been supplied by the owner and whilst every care has been taken in the preparation of this schedule and the information is believed to be correct, it does not warrant or constitute any offer or contract.

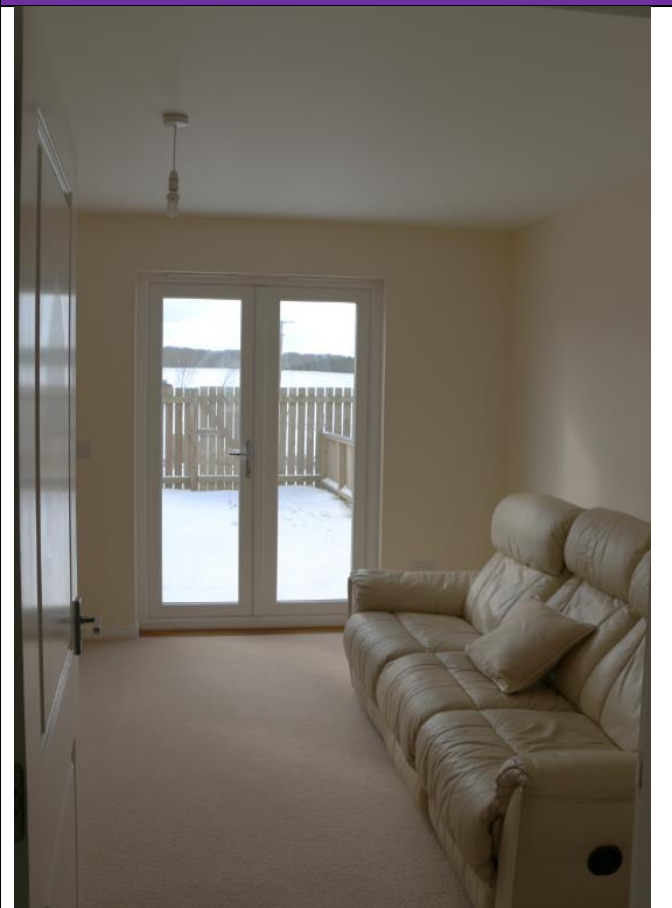
Living Room



Kitchen



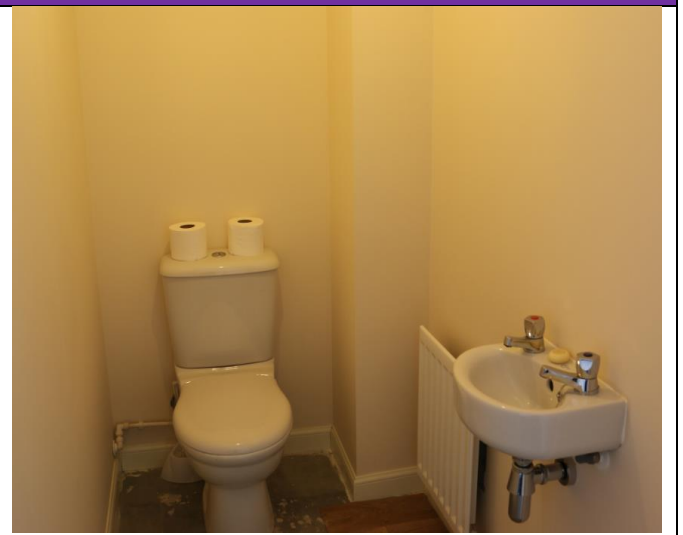
Alternative View of Living Room



Alternative View of Kitchen



Downstairs Toilet



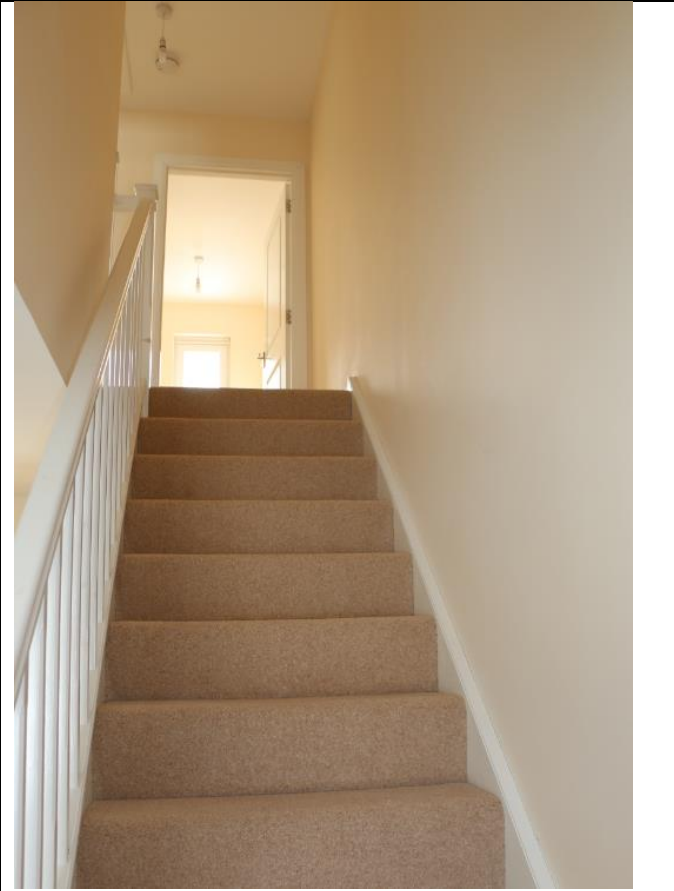
Bedroom 1



Bedroom 2



Stairs



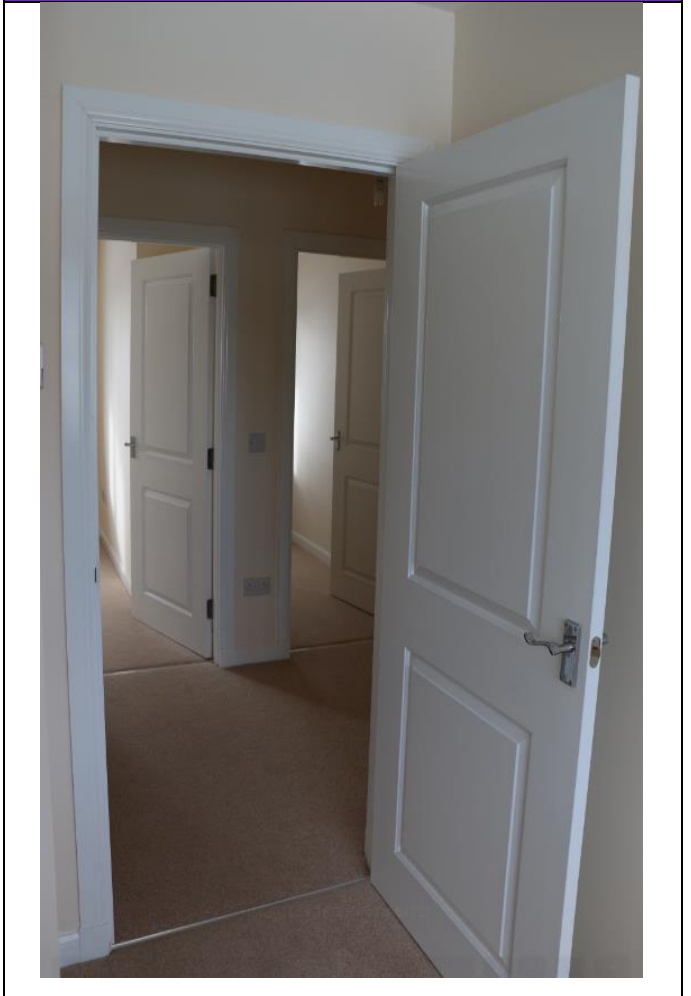
Study



Bathroom



Upper Hall



Alternative View of Bathroom



View from Rear of Property



Location



Newburgh is a historic town set at the estuary of the River Ythan. It is located approximately 13 miles north of Aberdeen within commuting distance of Inverurie, Dyce, Ellon and Peterhead. Due to the coastal location Newburgh enjoys a stunning beach and a nearby nature reserve. It also benefits from local amenities including a shop, pub and golf club.



Further Information

For further information please contact:

Development Officer - 01467 539457

LCHO@aberdeenshire.gov.uk