

From mountain to sea

Low Cost Shared Equity New Build Property FOR SALE

Stephen Court, Main Street, Turriff, AB53 4AD

2 bed ground floor flat

£94,592



201

Low Cost Shared Equity Property Schedule

Properties Available	Properties Available From
2 bed ground floor flat	Summer 2018
Heating Type	Price
Electric Air Source	£94,592
Floor Space	Income Threshold
Approx. 48sqm	£36,000 or Less
Accommodation	Factoring
Hall, Open plan Kitchen/ Living area, 2 bedrooms and a shower room	£30 per month to be paid on the 1 st of each month. Cost covers exterior lighting, waste pump and maintenance of shared outside areas.
Garden	Eligibility Criteria
Shared Drying Area	See guidance notes for Eligibility Criteria
Parking Arrangements	Closing Date
On Street Parking	Friday 15 th June 2018

The information in this schedule has been supplied by the developer and is for guidance only and whilst every care has been taken in the preparation of this schedule and the information is believed to be correct, it does not warrant or constitute any offer or contract and may be subject to change.

Open Plan Kitchen/ Living Room



Alternative View of Kitchen/ Living Room



Kitchen



Shower Room



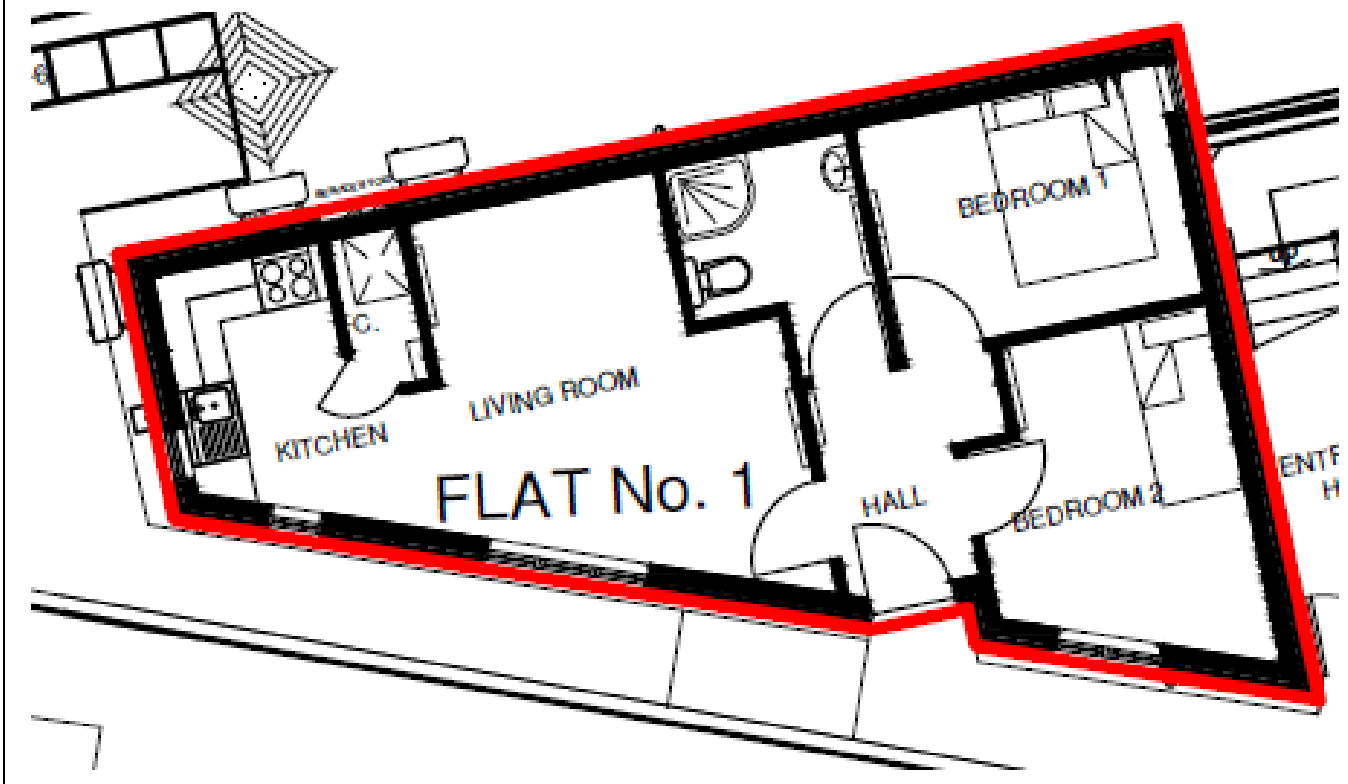
Bedroom 1



Bedroom 2



Floor Plan

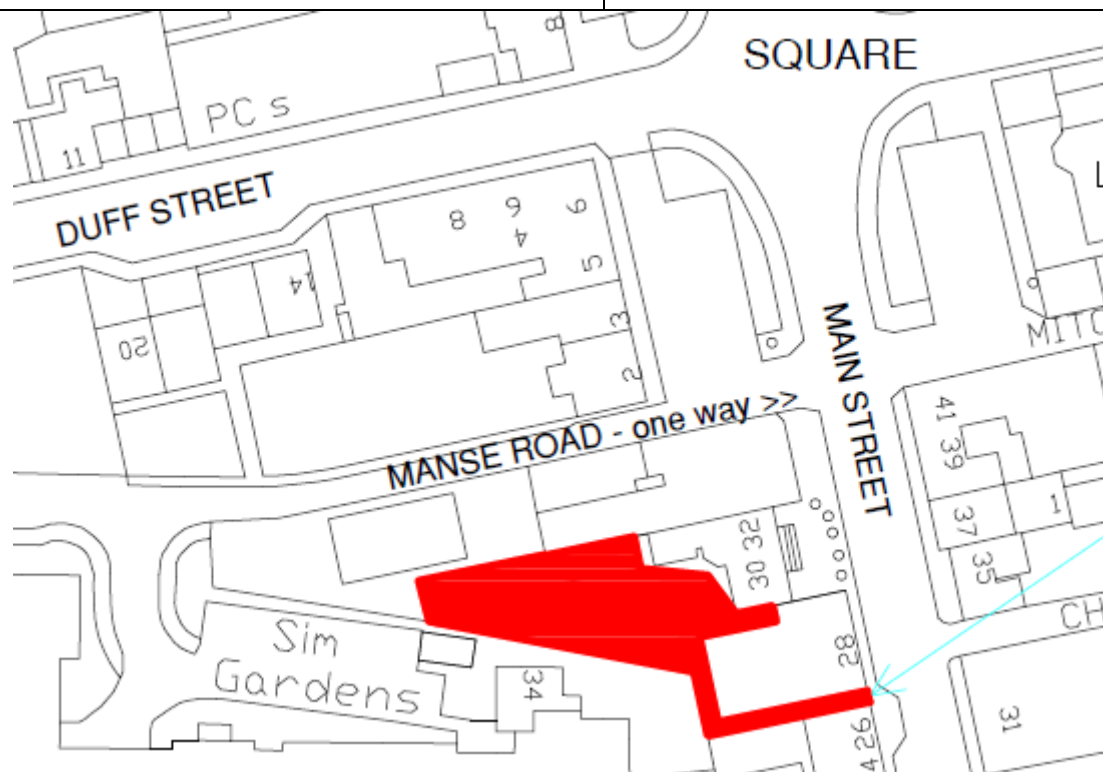


Location



Turriff is a market town situated in north Aberdeenshire, approximately 38 miles north-east of Aberdeen city centre, around 11 miles south-east of Banff, and 9 miles south of MacDuff. The town is served by a local bus service as well as a regular service to and from Aberdeen.

The town is home to a number of amenities including primary, secondary and nursery schools in the surrounding area, making it a great location for young families. Turriff also benefits from a number of local shops including several banks and a supermarket.



Further Information

For further information please contact:

Development Officer - 01467 534685

LCHO@aberdeenshire.gov.uk